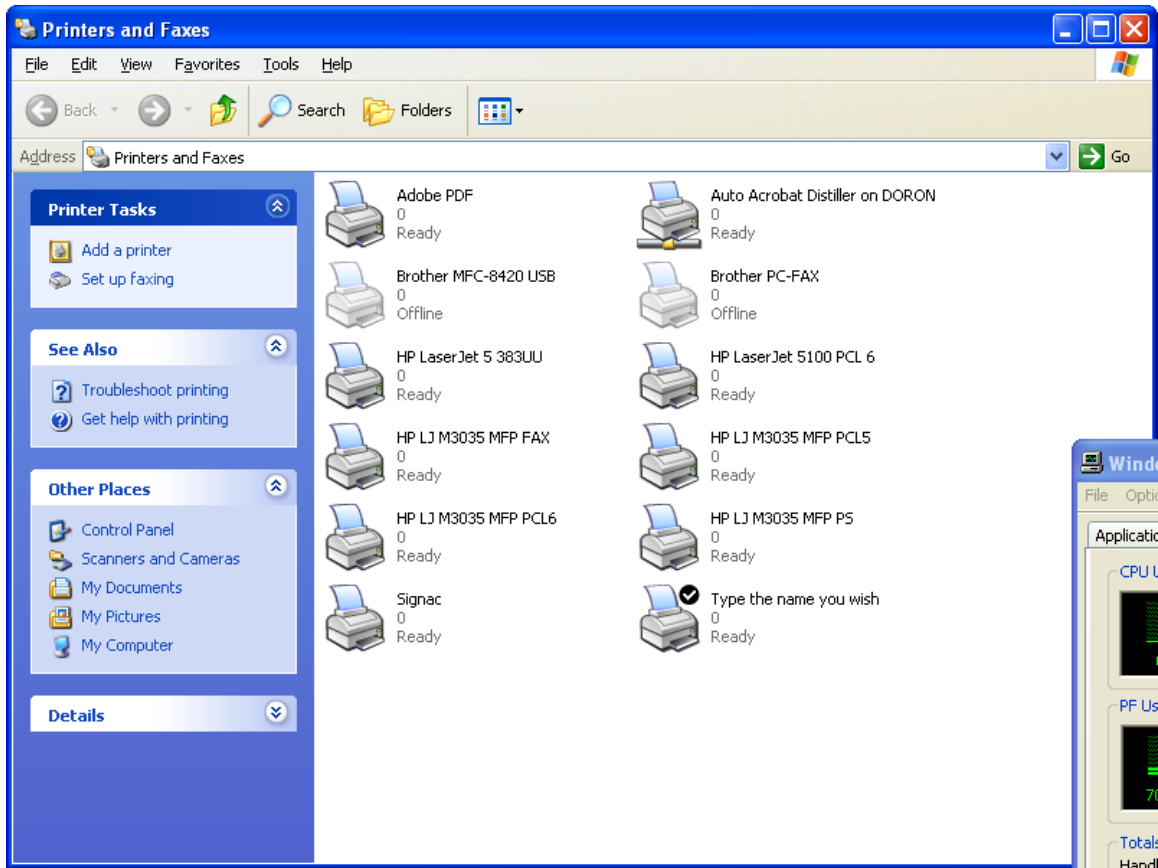


Setting up Windows printing

Monday, April 02, 2007

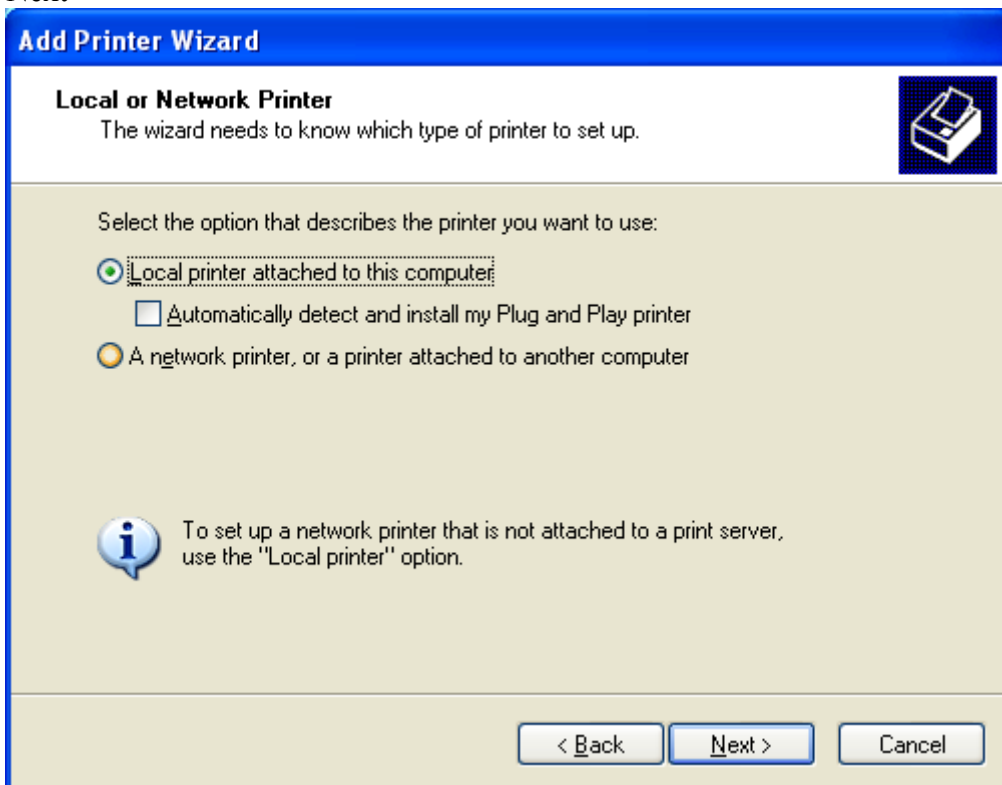
Start -> Settings -> Printers and Faxes

Add a printer

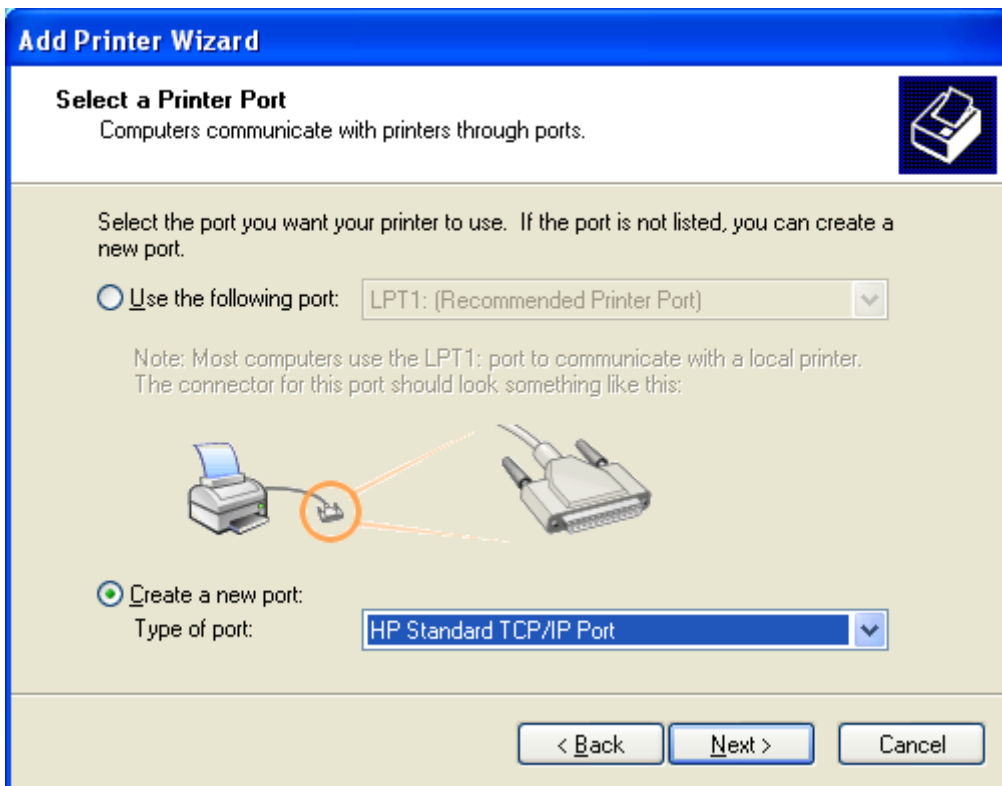




Next



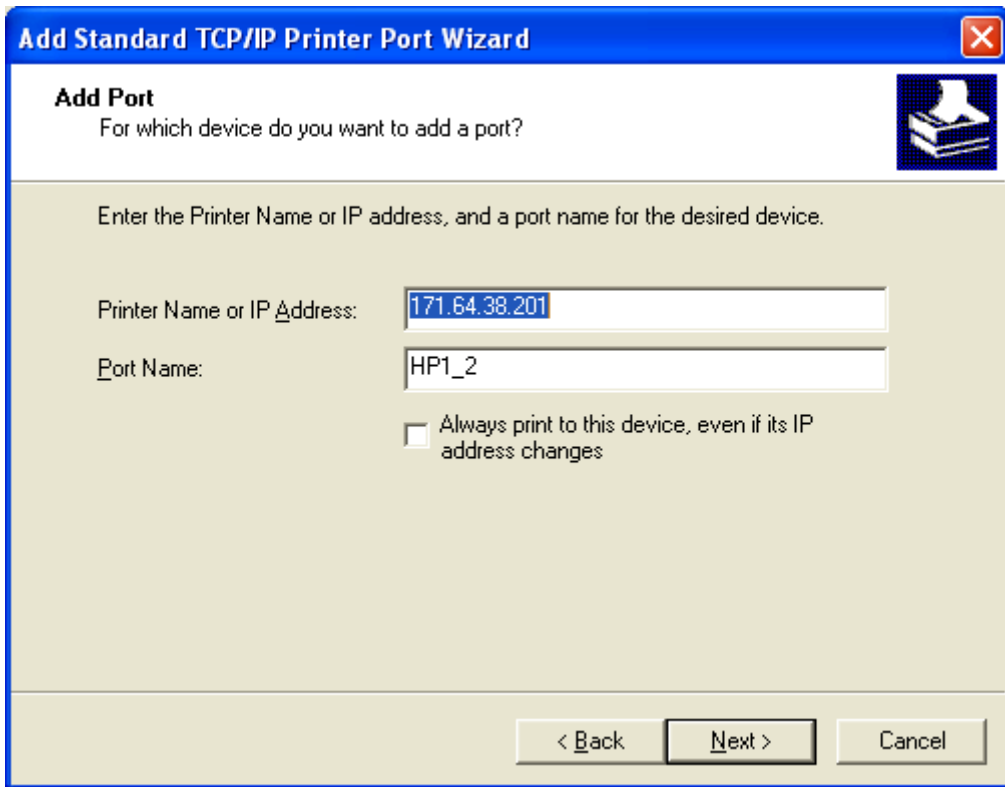
Next



Create a new port: and "HP Standard TCP/IP Port"



Next

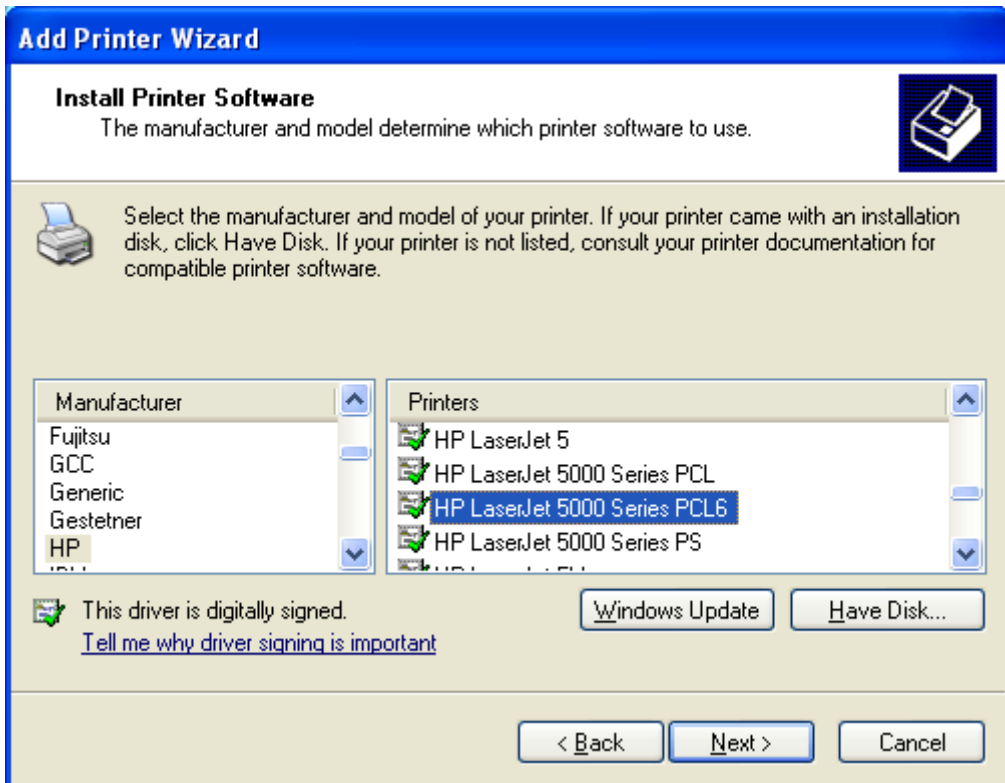


Next

HP0	171.64.38.200
HP1	171.64.38.201
HP2	172.24.38.202
HP3	171.64.38.203
Signac	172.24.38.16
Seurat	172.24.38.15




Finish



Select HP and Printer then next

Add Printer Wizard

Name Your Printer
You must assign a name to this printer.



Type a name for this printer. Because some programs do not support printer and server name combinations of more than 31 characters, it is best to keep the name as short as possible.

Printer name:

Do you want to use this printer as the default printer?


Yes
 No

< Back Next > Cancel

Give your printer a name and click next.

Add Printer Wizard

Print Test Page
To confirm that the printer is installed properly, you can print a test page.

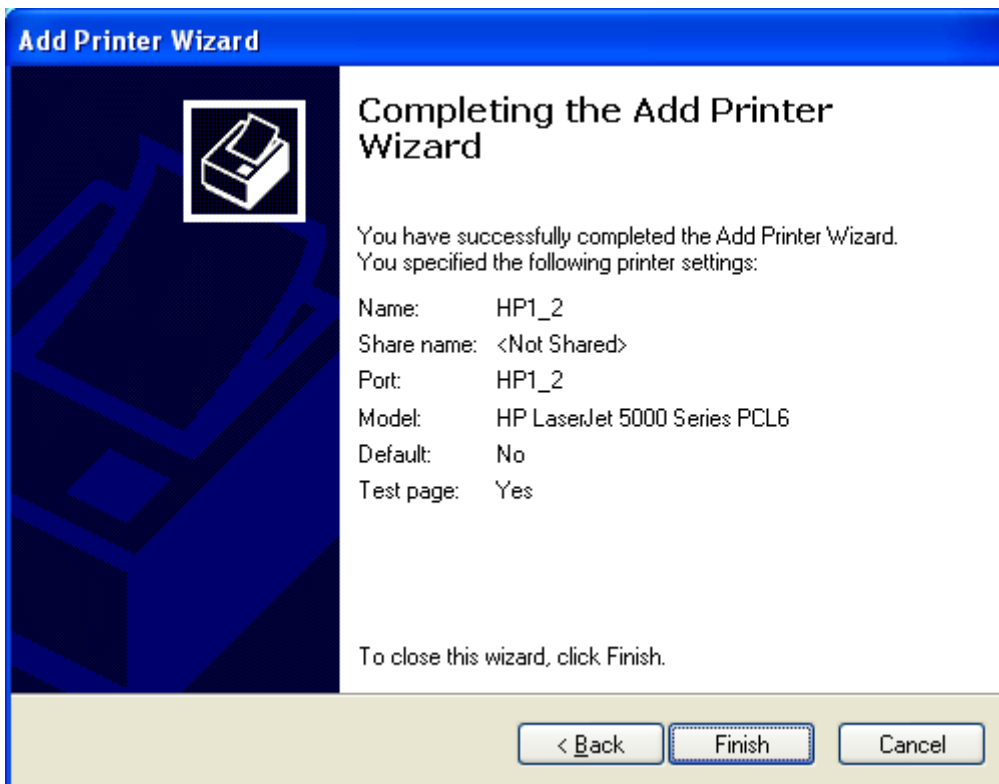


Do you want to print a test page?

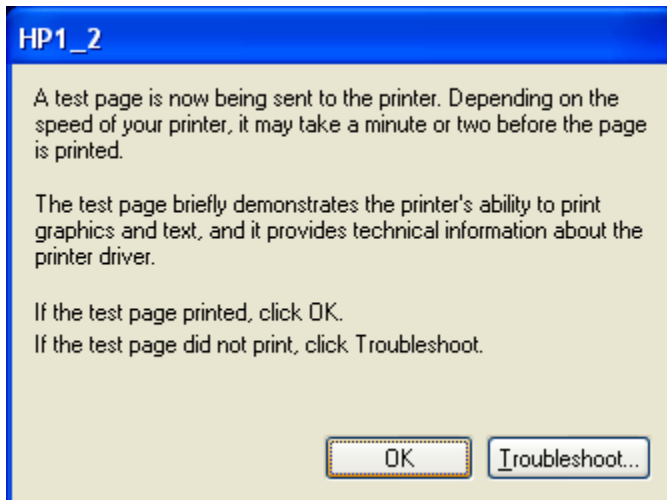
Yes
 No

< Back Next > Cancel

Next



Finish



OK